

Revisiting the spawning fraction of Pacific bluefin tuna (*Thunnus orientalis*) caught in the Sea of Japan based on diurnal changes in spawning markers

メタデータ	言語: en 出版者: 公開日: 2024-02-21 キーワード (Ja): キーワード (En): 作成者: 芦田, 拓土, 石原, 幸雄, 渡辺, 秀洋, 大下, 誠二, 田中, 庸介 メールアドレス: 所属: 水産研究・教育機構, 鳥取県水産試験場, 鳥取県水産試験場, 水産研究・教育機構, 水産研究・教育機構
URL	https://fra.repo.nii.ac.jp/records/2000203

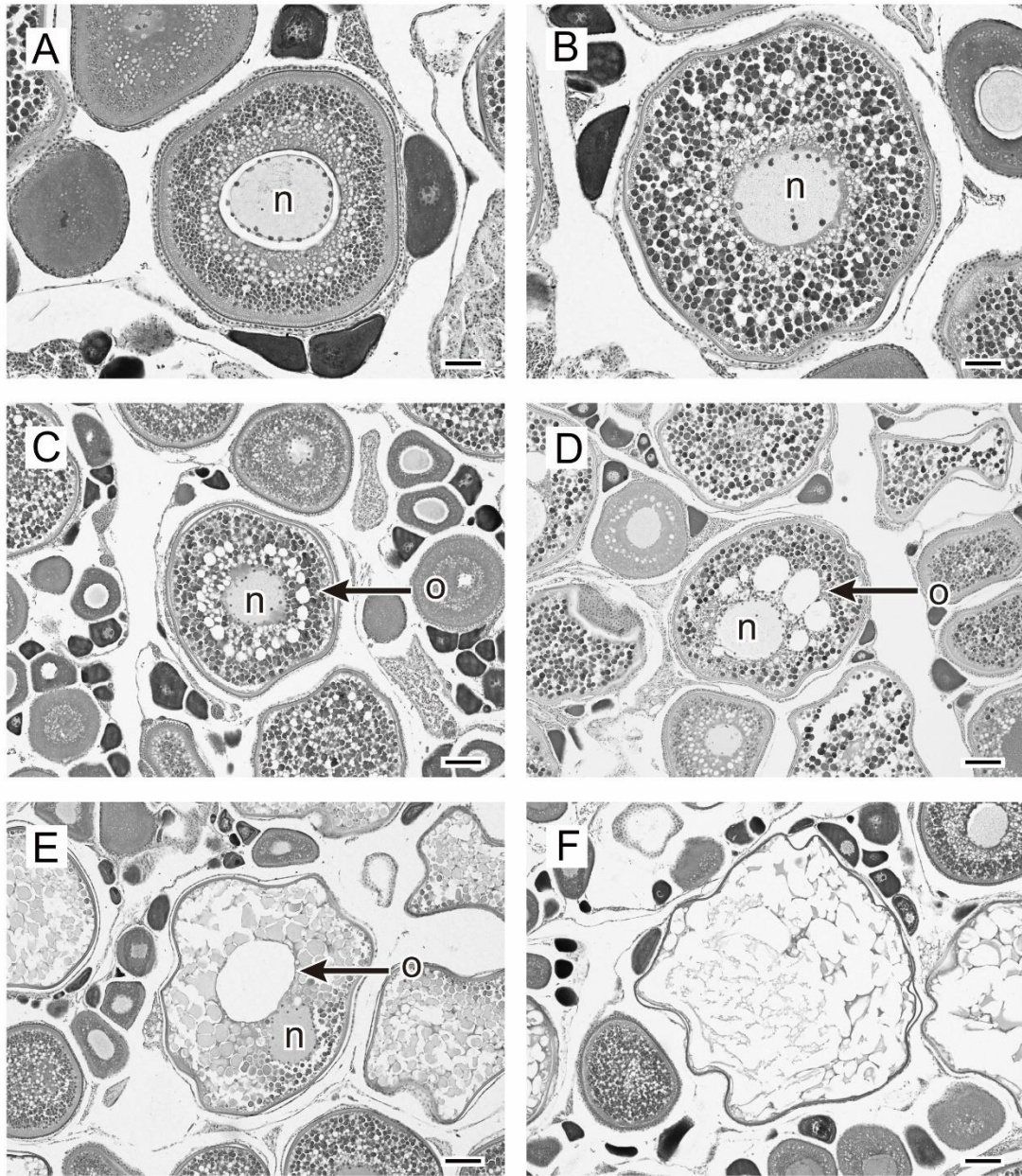


Fig. S1 Photographs of histological sections of each oocyte developmental stage in Pacific bluefin tuna (*Thunnus orientalis*) caught in the Sea of Japan.

(A) Primary yolked oocytes (i.e., early-yolked oocytes, scale bar = 50 μm), (B) secondary yolked oocytes (i.e., late-yolked oocytes, scale bar = 50 μm), (C) tertiary yolked oocytes (i.e., late-

yolked oocytes, scale bar = 100 μm), (D, E) germinal vesicle migration oocytes (scale bar = 100 μm), (F) hydrated oocytes (scale bar = 100 μm).

n, nuclei; o, oil globule

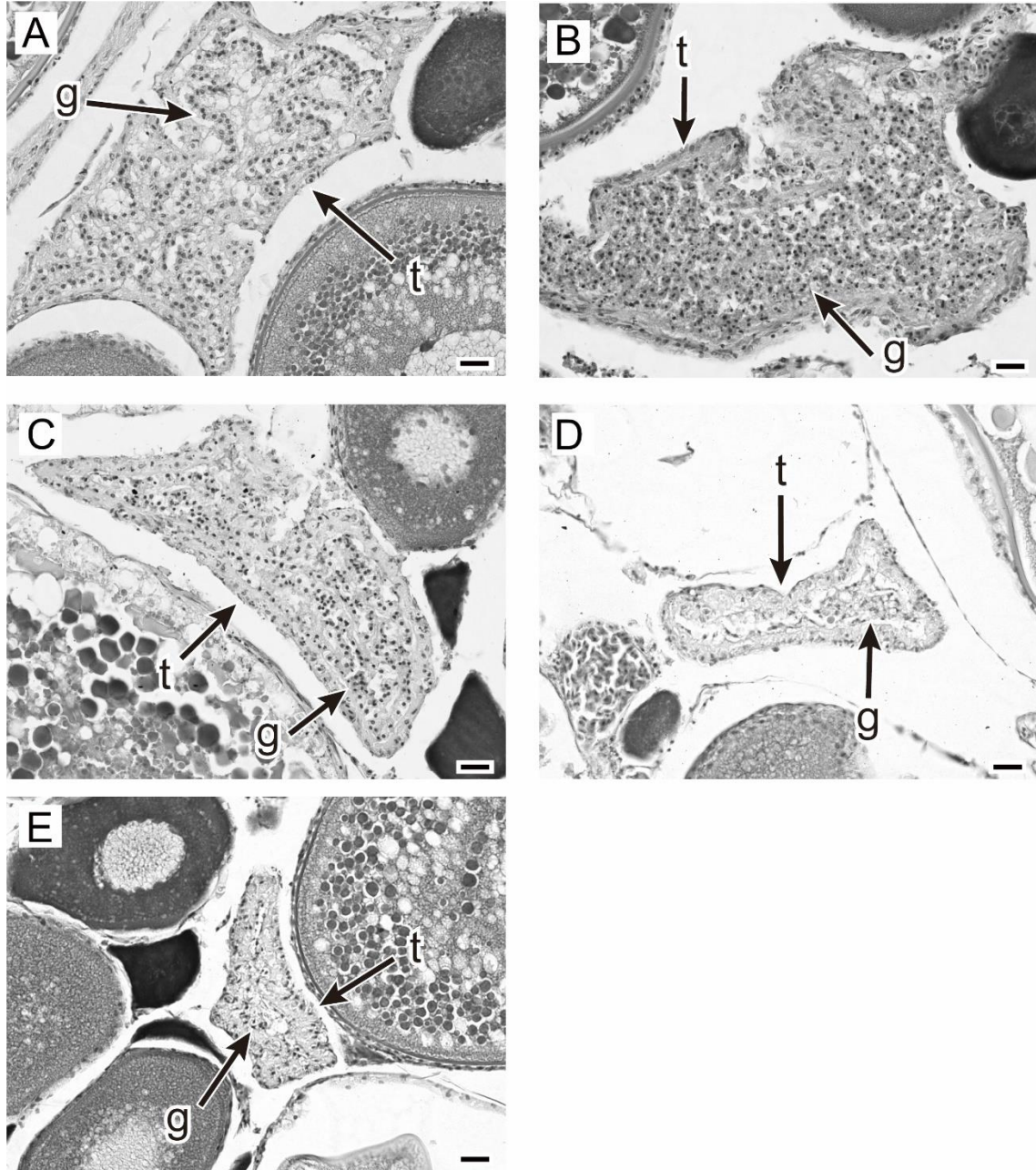


Fig. S2 Photographs of histological sections of each degeneration stage of postovulatory follicles

(POFs) in Pacific bluefin tuna (*Thunnus orientalis*) caught in the Sea of Japan.

(A) Early stage (scale bar = 20 μ m), (B, C) mid-stage (scale bar = 20 μ m), (D, E) late-stage

(scale bar = 20 μ m), (F) the fish that possessed both early and late stage (scale bar = 100 μ m),

(G) the fish that possessed both mid and late stage (scale bar = 20 μm).

g, granulosa cell; t, theca cell layer

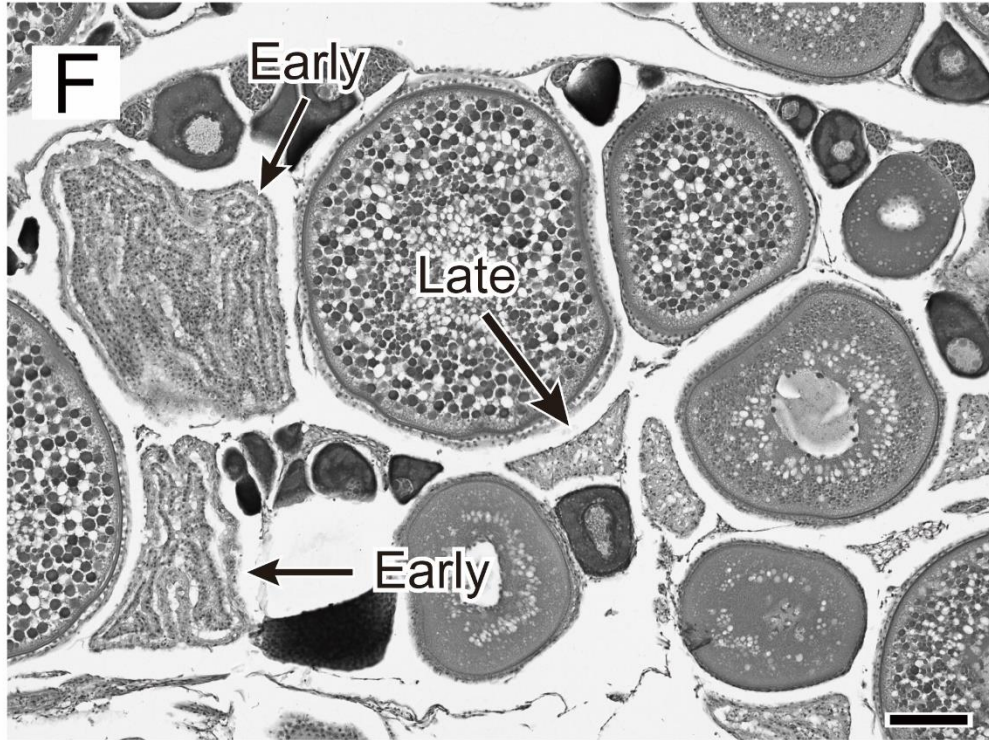


Fig. S2 (*continued*)