

## マダイの好中球顆粒の細胞化学的特徴

メタデータ	言語: English
	出版者: 水産大学校
	公開日: 2024-10-11
	キーワード (Ja):
	キーワード (En): granule; neutrophil; Pagrus major; red seabream
	作成者: 近藤, 昌和, 安本, 信哉, 高橋, 幸則
	メールアドレス:
URL	所属:
	<a href="https://fra.repo.nii.ac.jp/records/2012094">https://fra.repo.nii.ac.jp/records/2012094</a>

This work is licensed under a Creative Commons Attribution 4.0 International License.



# Cytochemical Characteristics of Neutrophil Granules from Red Seabream *Pagrus major*

Masakazu Kondo<sup>†</sup>, Shinya Yasumoto and Yukinori Takahashi

**Abstract** : Cytochemical characteristics of two types of neutrophil granules, chromophobic granules ( $\beta$ G-1 and  $\beta$ G-2), in red seabream *Pagrus major* were examined. The  $\beta$ G-1 reacted positively to peroxidase and to Sudan black B. Both positive reactions were also observed in the chromophobic area which surrounds eosinophilic core of the  $\beta$ G-2. Lysosomal enzymes such as acid phosphatase,  $\beta$ -glucuronidase, and non-specific and specific esterases were detected in the core of the  $\beta$ G-2. A curious phenomenon, spot formation, was found in/above the  $\beta$ G-2 stained with peroxidase.

**Key words** : granule, neutrophil, *Pagrus major*, red seabream

## Introduction

In previous reports<sup>1-7)</sup>, only eosinophilic granules have been recognized in the neutrophils of red seabream *Pagrus major* (eosinophil described in Ikeda et al.<sup>1)</sup>, eosinophilic cell in Watanabe et al.<sup>2)</sup>, heterophilic granulocyte (heterophil) in Watanabe et al.<sup>3,5)</sup>, granulocyte in Watanabe et al.<sup>4)</sup> and granulocyte in Toida et al.<sup>7)</sup> correspond to neutrophils). We have found two types of granules in red seabream neutrophils: Eosinophilic granules ( $\alpha$ G) and chromophobic granules ( $\beta$ G)<sup>8)</sup>. The former was round to oval ( $\leq 0.4 \mu\text{m}$  in diameter) and contained lysosomal enzymes, whereas the latter was also round to oval ( $\leq 0.5 \mu\text{m}$  in diameter) but react positively to peroxidase (PO) and Sudan black B (SBB)<sup>8)</sup>.

Recently, it became apparent that the  $\alpha$ G was surrounded by a chromophobic area; this finding suggests that the  $\alpha$ G itself is not a granule but is instead a core part (eosinophilic core, EC) of  $\beta$ G<sup>9)</sup>. We also observed  $\beta$ G without EC. These results indicate that red seabream neutrophils contain two types of  $\beta$ G, namely one without EC ( $\beta$ G-1) and the other with EC ( $\beta$ G-2)<sup>9)</sup>. Both types of granules react positively to peroxidase PO, but EC of  $\beta$ G-2 was negative<sup>9)</sup>. Here, we report cytochemical characteristics of neutrophil granules in red seabream.

## Materials and Methods

The fish used in this study were one-year-old red seabream (approx. 200 g body weight) and reared in National Fisheries University, at 25°C and fed commercial diet (Marine No. 6, Hayashikane Sangyo Co., Ltd) *ad libitum*. Blood smears on slides were stained with May-Grünwald-Giemsa, acid phosphatase (AcP),  $\beta$ -glucuronidase ( $\beta$ -Glu),  $\alpha$ -naphthyl acetate esterase ( $\alpha$ -NAE),  $\alpha$ -naphthyl butyrate esterase ( $\alpha$ -NBE), naphthol AS-D chloroacetate esterase (NASDCAE), PO and SBB, as described previously<sup>10)</sup>. Intact and lysed neutrophils were observed under a light microscope.

## Results and Discussion

All tested lysosomal enzymes except for  $\alpha$ -NAE, showed a granular positive reaction in intact neutrophil (Fig. 1, Table 1). The activity of  $\alpha$ -NAE was observed in the cytoplasm with diffuse and granular reaction. This diffuse positive site corresponds to hyaloplasm. The number of positive granules was different among tested enzymes (many: AcP,  $\alpha$ -NBE, NASDCAE, some:  $\alpha$ -NAE, a few:  $\beta$ -Glu). However, positive granules were similar to EC of  $\beta$ G-2 in shape (round or oval) and size ( $\leq 0.4 \mu\text{m}$ ). Furthermore, negative area was detected around the

positive granules in the lysed neutrophil. These findings indicate that the core of  $\beta$ G-2 contains lysosomal enzymes.

PO-positive reaction was limited to the granules in intact and lysed neutrophils (Fig. 1, Table 1). The positive granules were classified into two types as described by Kondo et al.<sup>9)</sup>; one showed positive reaction in the entire granule, and other in part: Surrounding of the negative core (hereafter called surrounding) was PO-positive. These positive granules may correspond to  $\beta$ G-1 and  $\beta$ G-2, respectively. PO-negative granule was not found in lysed neutrophils. A curious phenomenon, spot formation, was observed in/above the PO-stained  $\beta$ G-2: The  $\beta$ G-2 was out of focus in that focus. Strong positive (dark brown) and round spot was overlapped in PO-negative core of  $\beta$ G-2 in intact and lysed neutrophils. The diameter of the spot was smaller than that of the core. This phenomenon may be explained by lens-like action of the core; namely, light passed through PO-positive surrounding could be condensed by the core into spot. If the spot is an entity, it would be found not only above but also beside the core. However, the spot was never detected beside the core. This result suggests that the spot could not be entity, but an image optically generated.

The SBB-positive granules in intact neutrophil were classified into two types based on the presence or

absence of negative core. Each SBB-positive granule seems to be  $\beta$ G-1 and  $\beta$ G-2, respectively (Fig. 1, Table 1). Spot formation was not recognized in SBB-positive granules. Unfortunately, no positive granules were detected in lysed neutrophils. In process of SBB stain, overstained preparation was rinsed with ethanol to wash off surplus SBB dye. The granules of lysed neutrophil were localized out of cell membrane. Therefore, SBB dye in the granules of lysed neutrophil would have disappeared more rapidly than that in the granules of intact neutrophil.

Watanabe et al.<sup>2,4)</sup> also reported that the neutrophil granules were PO- and SBB- positive, but negative core in the these positive granule and spot formation described above were not observed. Furthermore, they failed to detect the esterase activity in the neutrophil<sup>4)</sup>.

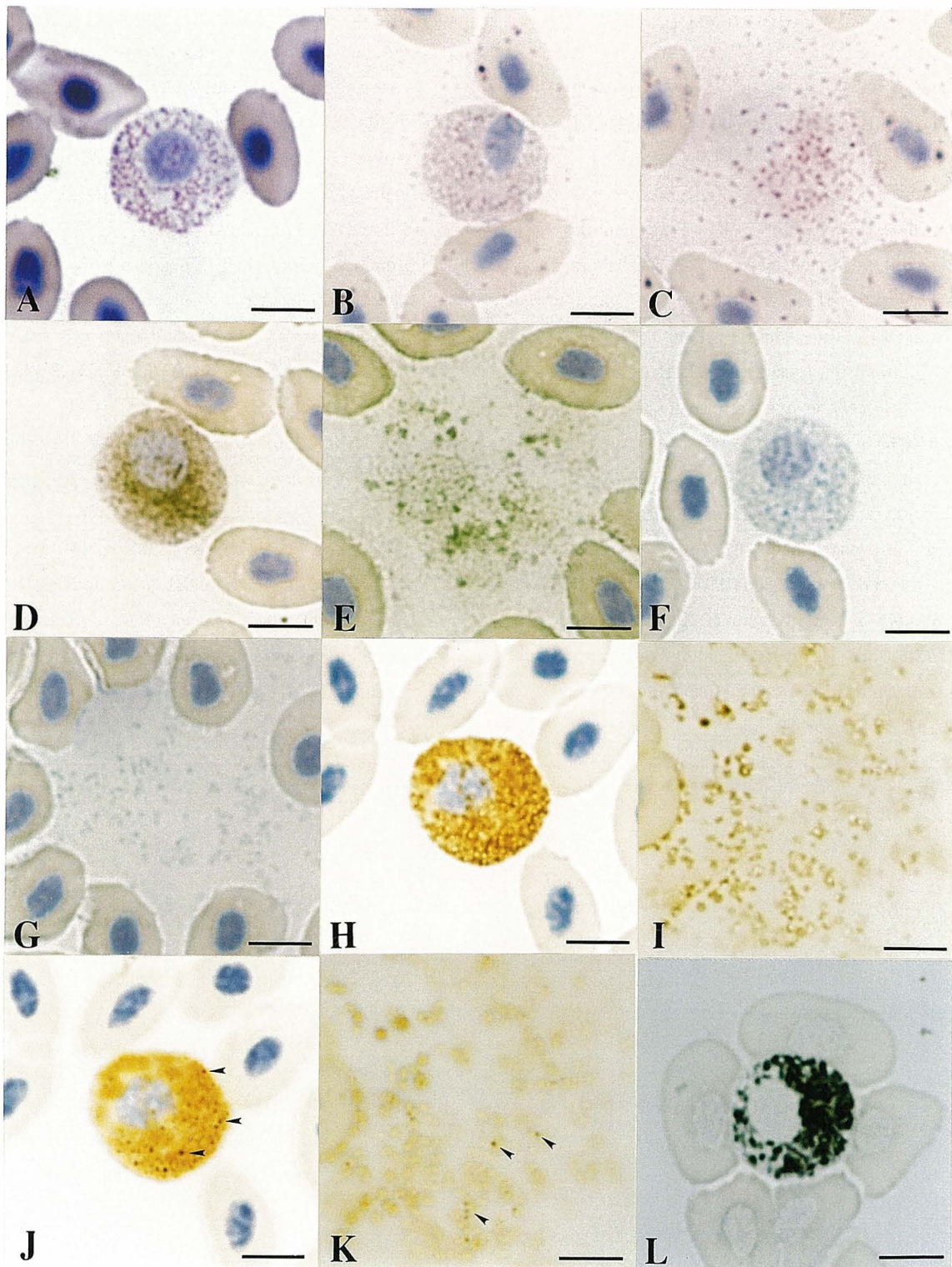
It became evident from the present study that the  $\beta$ G-1 and the surrounding of  $\beta$ G-2 were PO- and SBB- positive, and the core of  $\beta$ G-2 contained several lysosomal enzymes. It has not escaped our notice that the cytochemical similarity between  $\beta$ G-1 and surrounding of  $\beta$ G-2 suggests a granule maturation from  $\beta$ G-1 to  $\beta$ G-2: The  $\beta$ G-1 appear first; later, lysosomal enzymes add to  $\beta$ G-1; finally, lysosomal enzymes would have spontaneously condensed in the  $\beta$ G-1 into core. If this is the actual case, almost all granules of mature neutrophils from red seabream should be  $\beta$ G-2.

**Table 1.** Summary of reactions of red seabream neutrophil to cytochemical tests (modified from Kondo et al.<sup>8)</sup>)

Test	Type of granules and reaction			Other positive site (shape, number and size)
	$\beta$ G-1	$\beta$ G-2		
		Core	Surrounding	
Periodic acid Schiff reaction (PAS)	—	—	—	G (round or oval, many, $\phi \leq 0.3 \mu\text{m}$ )*; H
PAS after digestion with $\alpha$ -amylase	—	—	—	—
Alcian blue (pH1.0)	—	—	—	—
Alcian blue (pH2.5)	—	—	—	—
Toluidine blue (distilled water)	—	—	—	G (amorphous, a few, eq Yb); N
Sudan black B	+	—	+	—
Sudan III	—	—	—	—
Oil red O	—	—	—	—
Alkaline phosphatase	—	—	—	—
Acid phosphatase	—	+	—	—
$\beta$ -Glucuronidase	—	+ (a few)	—	—
$\alpha$ -Naphthyl acetate esterase	—	+ (some)	—	H
$\alpha$ -Naphthyl butyrate esterase	—	+	—	—
Naphthol AS-D chloroacetate esterase	—	+	—	—
Peroxidase	+	—	+	—

$\beta$ G-1, chromophobic granule type 1;  $\beta$ G-2, chromophobic granule type 2 (consisted with eosinophilic core and chromophobic surrounding); G, granular; H, hyaloplasm; N, nucleus; Yb, Yasumoto body; eq, equivalent to; +, positive; —, negative (non-detection).

\*PAS-positive granule was accumulation of glycogen particles because the positive reaction of the granule disappeared after digestion with  $\alpha$ -amylase.



**Fig. 1.** Cytochemistry of red seabream neutrophil. A, May-Grünwald · Giemsa (intact cell); B & C, acid phosphatase (B, intact cell; C, lysed cell); D & E,  $\alpha$ -naphthyl acetate esterase ( $\alpha$ -NAE; D, intact cell; E, lysed cell); F & G, naphthol AS-D chloroacetate esterase (F, intact cell; G, lysed cell); H & I, peroxidase (H, intact cell; I, lysed cell); J & K, Sudan black B (intact cell). All enzymes except for  $\alpha$ -NAE and peroxidase, were detected in the core of  $\beta$ G-2 only. Activity of  $\alpha$ -NAE was localized not only in the core of  $\beta$ G-2 but also in the hyaloplasm. The  $\beta$ G-1 and surrounding of  $\beta$ G-2 were positively to peroxidase and Sudan black B. Note spot formation in J & K (arrowheads). Bars=5  $\mu$ m.

## References

- 1) Ikeda Y, Ozaki H, Sezaki K: 21 *Pagrus major*, Blood Atlas of Fishes, Midori-shobou, Tokyo, 45-47 (1986) (in Japanese)
- 2) Watanabe T, Kamijo A, Narita H, Kitayama K, Ohta H, Kubo N, Moritomo T, Kono M, Furukawa K: Resident peritoneal cells of red sea bream *Pagrus major*. *Fish Sci*, **61**, 937-941 (1995)
- 3) Watanabe T, Kitayama K, Takagi T, Murata J, Kono M, Takase T, Furukawa K: Heterogeneity of peritoneal cells in marine teleostes. *Fish Sci*, **63**, 576-581 (1997)
- 4) Watanabe T, Shoho T, Ohta H, Kubo N, Kono M, Furukawa K: Long-term cell culture of resident peritoneal macrophages from red sea bream *Pagrus major*. *Fish Sci*, **63**, 862-866 (1997)
- 5) Watanabe T, Kubo N, Ohta H, Kono M, Furukawa K: Production site of red sea bream *Pagrus major* intraperitoneal free cells: Morphological study. *Fish Sci*, **64**, 265-269 (1998)
- 6) Matsuyama T, Iida T, Kurokura H: Kinetics of defense activities of inflammatory neutrophils in carp and red sea bream. *Fish Pathol*, **34**, 133-137 (1999)
- 7) Toida S, Kanai K, Yoshikoshi K: The kinetics of leukocytes and histopathology of red sea bream in artificial infection of *Edwardsiella tarda*. *Fish Pathol*, **38**, 137-142 (2003)
- 8) Kondo M, Sakaguchi T, Kanamaru S, Kashiwamura N, Takahashi Y: Morphological and cytochemical characteristics of neutrophil from red sea-bream, *Pagrus major*. *J Nat Fish Univ*, **58**, 15-22 (2009) (in Japanese with English abstract)
- 9) Kondo M, Yasumoto S, Takahashi Y: Two types of granules in neutrophils from red sea-bream *Pagrus major*. *J Nat Fish Univ*, **64**, 269-271 (2016)
- 10) Kondo M, Takahashi Y: Morphological and cytochemical characteristics of neutrophil from Japanese eel, *Anguilla japonica*. *J Nat Fish Univ*, **58**, 1-13 (2009) (in Japanese with English abstract)

## マダイの好中球顆粒の細胞化学的特徴

近藤昌和, 安本信哉, 高橋幸則

マダイの好中球に存在する2種類の難染性顆粒の細胞化学的特徴を調べた。エオシン好性の芯を欠く顆粒( $\beta$ G-1)と芯を有する顆粒( $\beta$ G-2)のどちらも難染性領域( $\beta$ G-1では顆粒全体,  $\beta$ G-2では芯の周囲)がペルオキシダーゼおよびSudan black B陽性であった。種々のライソゾーム酵素は $\beta$ G-2の芯に検出された。顕微鏡の焦点をペルオキシダーゼ染色された $\beta$ G-2からその上方に移すと、芯に重なるように強陽性を示す斑が形成された。斑形成は芯のレンズ様作用によるものであり、斑に実体はなく、このレンズ様構造で見える光学的な像であると考えられた。